



Belt Mergers
MERGE MAXX 760 - 950 - 1090





Contents

02-03	A different way of windrowing	11	Another way of working
04-05	Adapting to anything	12	Easier to drive! Compact on the road
06-07	Regular windrows: +2 to 3 kph*	13	Thrilled with it and saying so
08-09	Impressive ground following	14-15	Technical specifications
10	Enter the big league		

MERGE MAXX 760 - 950 - 1090

Belt mergers

A DIFFERENT WAY OF WINDROWING

MERGE MAXX BELT MERGERS ARE HIGHLY VERSATILE MACHINES. THEY ARE CAPABLE OF GATHERING ANY TYPE OF FORAGE, GENTLY, IN ORDER TO RETAIN ITS MAXIMUM FEED VALUE. TWO INDEPENDENT PICK-UPS PROVIDE DIFFERENT RAKING WIDTHS, IN SINGLE WINDROW MODE AND "CENTRAL WINDROW" MODE.



A MULTITUDE OF POSSIBILITIES. From grass to alfalfa, whole-plant silage or hay, biogas plants, grain or rape straw, this machine gathers any type of crop to form windrows with its different windrowing configurations.

LARGE-SCALE PERFORMANCE. With their adjustable working widths, MERGE MAXX belt mergers can collect up to 30 m of forage. They form uniform windrows enabling the harvesting machines that follow to work at high speeds of up to 3 kph*.

KEEPING FEED VALUE HIGH AND SOIL CONTENT LOW. Forage is picked up by the machine which reduces both leaf loss and soil and stones in the forage. After being transferred to the belt, windrows can be delivered and picked up again to form the extra-large final windrow.

ADAPTING TO ANYTHING

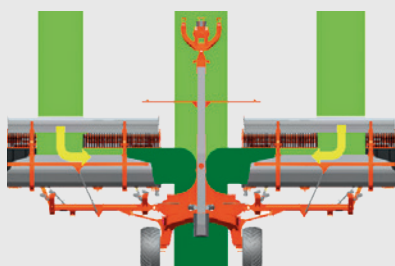
MERGE MAXX belt mergers have up to eight different delivery options.

They are capable of:

- Picking up any type of forage, light or heavy, dense or sparse, long or short (temporary or permanent grassland, straw or whole plants, meslin, hay,...).
- Adapting to harvesting methods: 1 m windrows for balers and self-propelled loaders, and up to 2.20 m for forage harvesters. Deliver central windrows with adjustable width, side windrows with different pick-up widths or combine the options.
- Adapting easily to different plot configurations.



Central delivery

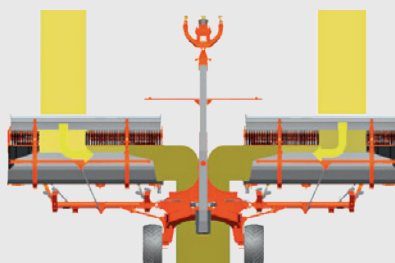


1

The 2 units are distanced.
The belts take the forage
to the centre of the machine.

A central windrow is created
with 8 to 11 m of forage.

Windrow width can be
adapted to the size of the
pick-up depending on the
distance set between the
pick-up units (1. 2.).



2

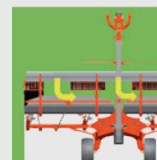
20 to 30 m in one windrow

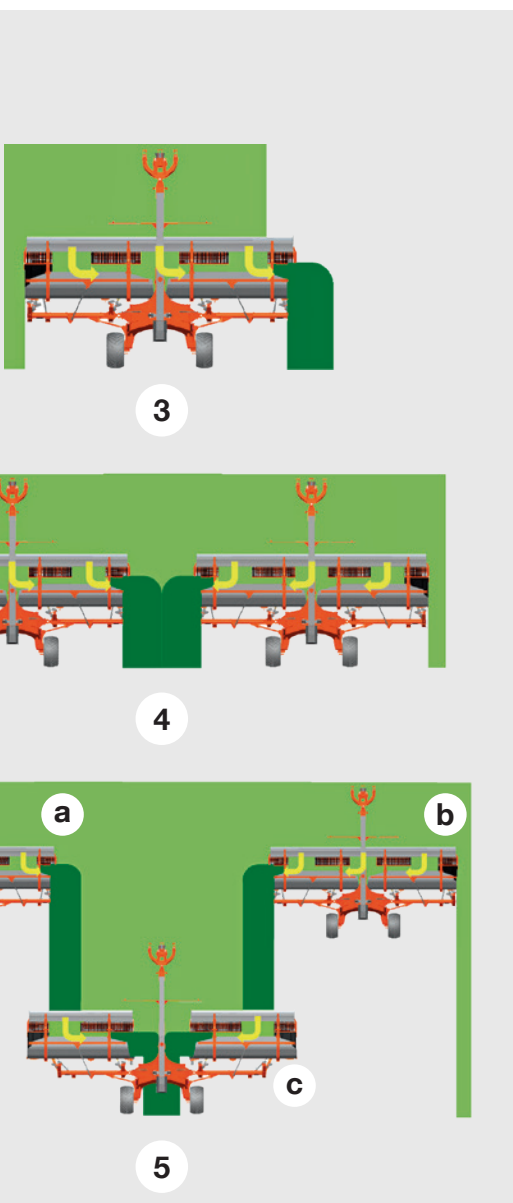
If the belts are brought closer
together and turn in the
same direction, one single
windrow is created, either to
the left or to the right of the
machine (3).

Different raking widths can be
put together in low forage
volume situations (4).



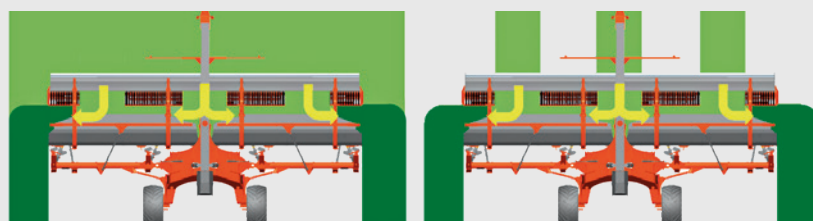
Get the best of both worlds
with side and central delivery (5):
1st pass with right delivery (a),
then left side delivery (b), then
finish the windrow (c).





If forage is heavy

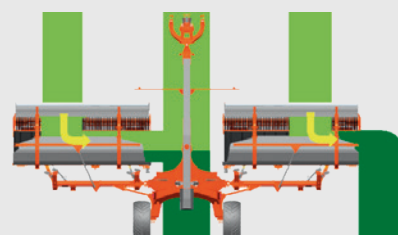
Adjust the configuration:



- Half the forage is guided to one side and half to the other (6).

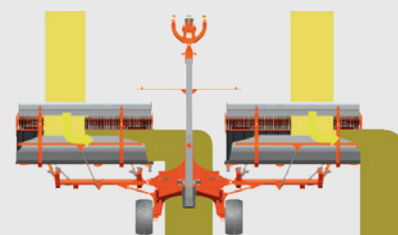
6

- Half the forage is guided to a central windrow and half to a side windrow (7).



7

- This can be useful for turning two straw windrows simultaneously! (8).



8

REGULAR WINDROWS: + 2 TO 3 KPH* FOR THE HARVESTING MACHINE



With MERGE MAXX belt mergers, you also reduce peaks in operating stress put on harvesting machines. MERGE MAXX users attest to increasing working speeds by 2 to 3 kph!

You too can improve all-round productivity. Less soil and stones in the windrow reduces wear to the intake system and reduces operating costs.



THE PICK-UP AND WINDGUARD WITH ROLLER

Pick-up quality and regularity are directly related to the design of the pick-up unit. In combination with the WINDGUARD reel, the pick-up optimises forage uptake, lift and smooth transfer to the belt. Rotation speed of the pick-up is variable so can adapt to different harvesting situations. When necessary, rotational speed can be reduced to preserve the leaves of very delicate forage and thus the final product's nutrients. It takes just a few moments and requires no tools to adjust the tension of the belt. The wide belt transfers the product to the side. Belt speed can be modified, as required, independently of the speed of the pick-up.

Easier forage transfer

Rotation speed of the pick-up is variable by adjusting PTO speed. It is configured for most harvesting situations. Maintenance is very easy.



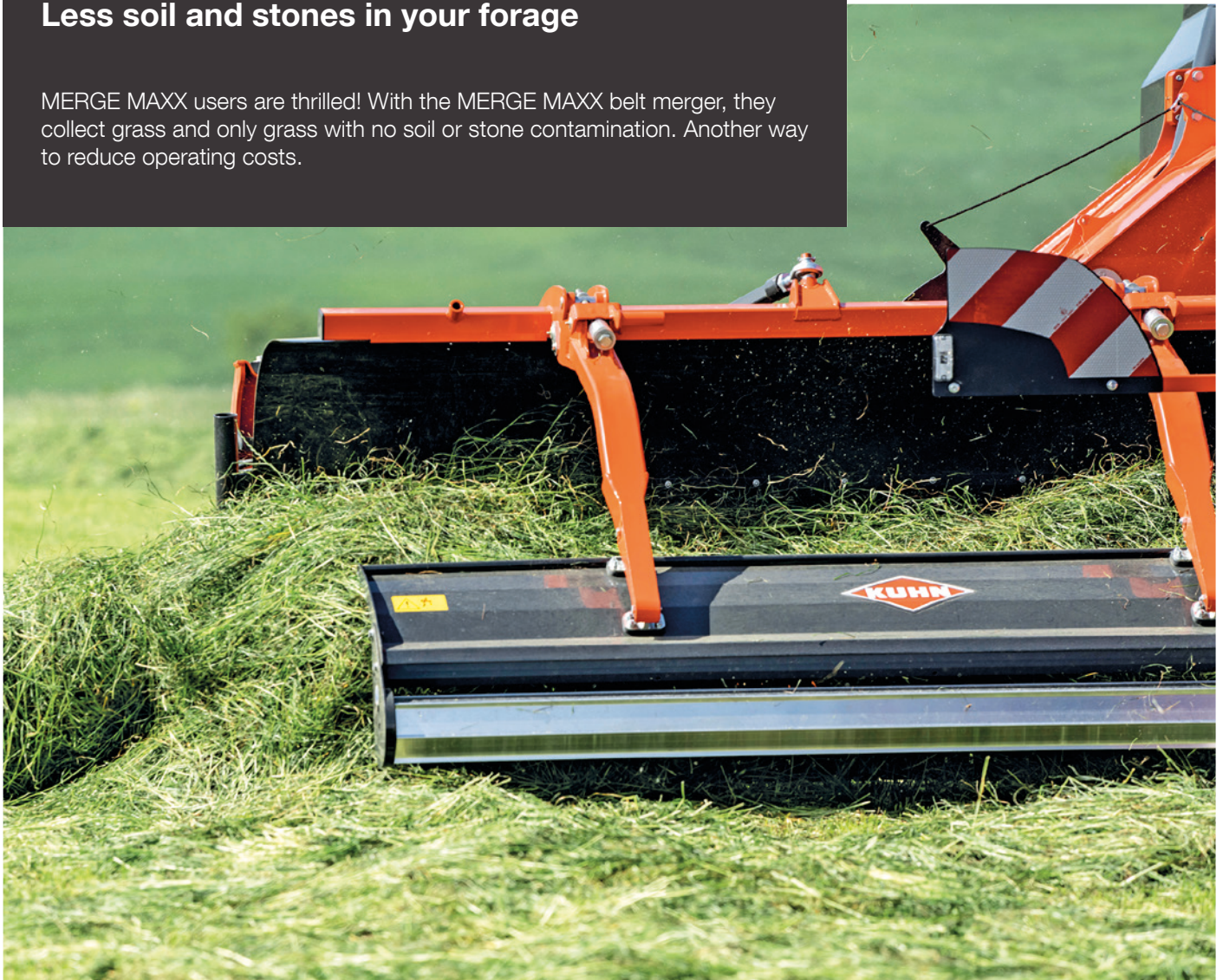
Belt adjustment

Fast and practical. Belt tension takes just a few moments to adjust and requires no tools.

*Depending on conditions

Less soil and stones in your forage

MERGE MAXX users are thrilled! With the MERGE MAXX belt merger, they collect grass and only grass with no soil or stone contamination. Another way to reduce operating costs.



EXCLUSIVE

WINDGUARD-with-roller system

Forage is taken in by the pick-up and guided by the WINDGUARD system which is composed of a guidance volute and a roller that optimise forage flow onto the conveyor belt. It automatically adjusts to the amount of forage. Windrows are uniform and fluffy with no twists so output is faster.

Side windrows perfectly calibrated

A windrow curtain can be ordered for side delivery to improve windrow calibration, especially when using a baler for pick-up. The driver can change windrow width at any time or fold the curtain back completely.



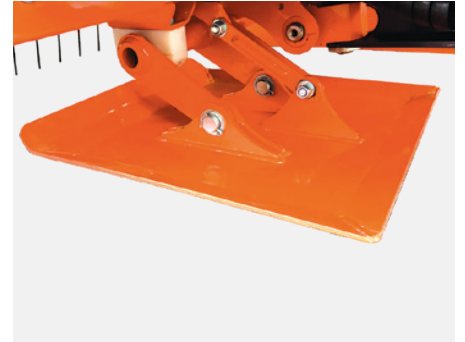
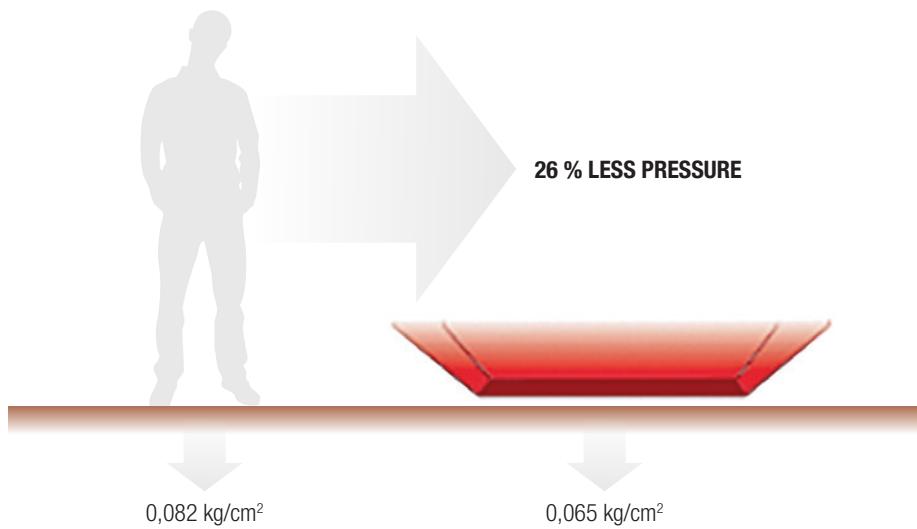
IMPRESSIVE GROUND FOLLOWING

The MERGE MAXX belt merger keeps ground pressure down to below 90 kg! In order to preserve grass stubble, the pick-up units come with a special suspension system with 4 powerful and adjustable springs. Each pick-up unit has an angle of $\pm 10^\circ$ and vertical travel range of $-20/+30$ cm so can adapt to uneven terrain. Four articulated skids contour the ground and guide each pick-up unit perfectly. Skid-height adjustment is centralised by crank handle on MM 950 and 1090 models.

EQUIVALENT WEIGHT ON THE GROUND

1 person weighing 90 kg

1 MERGE MAXX skid





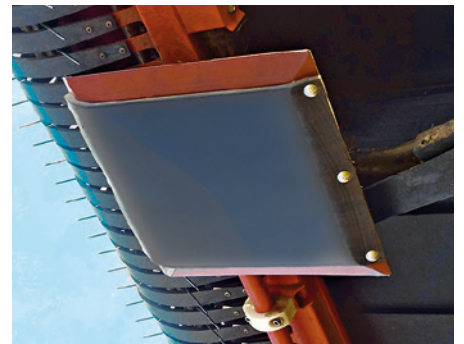
Linkage with integrated dampers

The linkage system on MM 950 and 1090 models includes dampers to prevent jolts being felt in the tractor. This is a KUHN exclusive which gives additional comfort when driving on poorly-kept roads.



Self-contained hydraulic circuit

To avoid excessive tractor hydraulic requirements, an integrated hydraulic unit drives the pick-ups and belts. The machine can run at 1000 rpm or in energy-saving mode at 750 rpm, to reduce fuel consumption. Pick-up speed can of course be reduced when gathering very delicate forage.



Extra protection

For windrowing in hot, dry weather, in straw or flinty ground, synthetic skids are available as an option. They protect the machine perfectly during harvesting operations.

ENTER THE BIG LEAGUE

The MERGE MAXX 760 belt merger completes KUHN's windrowing offer for individual farms. With a working width of 5.50 to 7.50 m in central windrow mode and 6.20 to 7.50 m in side delivery mode, this machine will provide full satisfaction on your farm.

THE SAME BENEFITS WITH A SMALLER WIDTH

It is designed to give users the same benefits as the larger versions:

- Flexible windrow-delivery modes
- Windrow uniformity for improved pick-up and output of the harvesting machine
- Less soil and stones in the forage



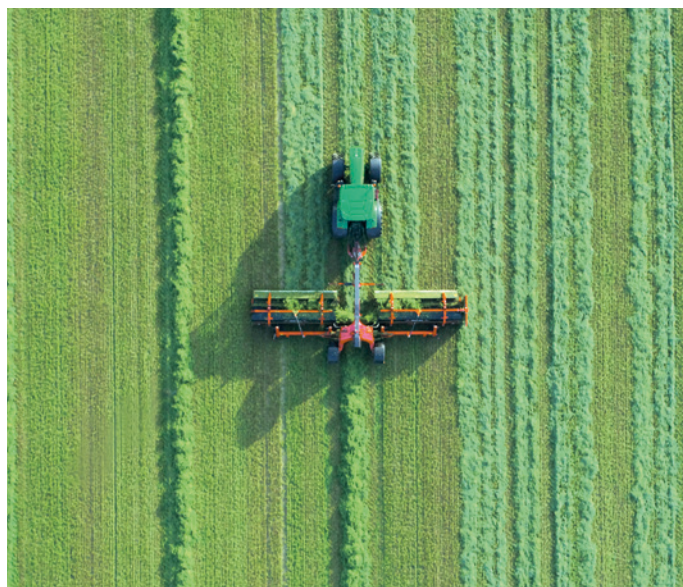
ANOTHER WAY OF WORKING

MERGE MAXX 950 and the new MERGE MAXX 1090 belt mergers are the ideal machines for contractors and machinery cooperatives that work on large operations.

TWO MODELS FOR LARGE OPERATIONS

These two ultra-versatile belt mergers are the solution for high-performance and well-organised harvesting chains, necessary for large operations.

They adapt perfectly to harvesting methods: 1 m windrows for balers and loaders, and up to 2.2 m for forage harvesters.



EASIER TO CONTROL!



MERGE MAXX 760: easy to control with the KMM01 terminal

The KMM01 terminal gives the driver easy control of:

- windrow delivery mode,
- individual or simultaneous belt lift.



MERGE MAXX 950 - 1090: easy-to-use belt mergers

The machine's main functions are controlled with an AT10 control box that is simple and user-friendly:

- Windrow delivery,
- Rotational direction of belt,
- Setting to work / transport position,
- Hour meter.

The windrow curtain is controlled by a tractor valve directly.

COMPACT ON THE ROAD

Large operations can require a lot of road travel.

All MERGE MAXX belt mergers are designed to be compact, stable and practical on the road.



Perfectly designed for road travel

The shorter length of the machine, the effective folding feature, the linkage system with dampers (exclusive on MM 950 and MM 1090) and the pivot point set further to the back are all features that make the belt merger highly compact and stable on poorly-kept roads, and easy to handle on headlands.



THRILLED WITH IT AND SAYING SO

THESE BELT MERGERS HAVE BEEN TRIED AND TESTED
ON DIFFERENT FARMING OPERATIONS AND HAVE PROVEN TO
PERFORM WELL IN DIVERSE SITUATIONS. FIND OUT FOR YOURSELF!



Jérémie MASSON

GAEC AURORE - FRANCE

"We can harvest a good crop with the MERGE MAXX, and leave the plant debris, branches, soil and stones on the ground. It requires very low power; we work with a 95 horsepower tractor. The machine and the control box in the tractor cab are really easy to use."



Philippe DARNE

FRANCE

"We highly recommend a machine like the MERGE MAXX because it's so versatile. We harvest a lot of ryegrass and clover with it. We take it everywhere, even onto small plots. You can do anything with a machine like that."



Thomas WIRTH

AGRO-PRODUKT GMBH LEUBSDORF, GERMANY

"We produce silage for our 1,600 dairy cows on 150 hectares of grassland and 200 hectares of forage land. Since we have been using the Merge Maxx on our farm, we get less soil and stones in the feed. The MERGE MAXX is especially effective in areas where game passes through or tractor wheels leave their tracks. In the future, we'll grow clover again instead of periodic grazing, and we'll use the belt merger to pick forage up gently without damaging the leaves."



David & Robert VEITCH

AYRSHIRE, SCOTLAND

"The versatility of the machine gives us more operational efficiency and prevents grass contamination. There's no dust cloud like there is when you use a rake on a dry plot and no stones mixed in with the forage. This means that machine blades don't get broken as often, which is important, but more importantly we collect grass only, uncontaminated by soil and stones."

Technical specifications

	MERGE MAXX 760	
Uptake width (m)	5.50 / 7.50	
Working width in central delivery mode (m)	6.20 to 7.50	
"Working width in side delivery mode (average including initial windrow) (m)"	6.8	
Average windrow width (m)		
Transport width (m)		
Transport length (m)	6.6	
Transport height (m)		
Number of pick-ups and belts		
Pick-up height control		
Type of windrow		
Tyres	400 / 55 x 22.5	
Functions controlled by terminal	Simultaneous or individual lift, left/right windrow delivery selection	
PTO speed (rpm)		
Linkage		
Minimum PTO requirement (kW)	56	
Minimum PTO requirement (hp)	75	
Tractor hydraulic requirements		
Tractor electric requirements		
Lighting and signalling		
Weight (kg)	4,070	

Optional equipment: Pneumatic or hydraulic braking system, abrasion-resistant steel skid lining / in synthetic material for work in flinty ground,



KUHN PARTS



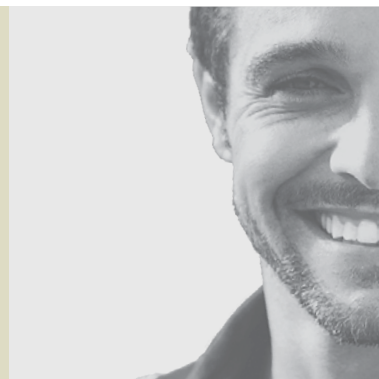
Designed and manufactured to rival time. KUHN foundries and forge as well as a high-level manufacturing process allow the production of spare parts to defy time. You can truly rely on our know-how and our genuine parts. Farmers benefit from our client support and logistics services via any KUHN PARTS warehouse, which provide quick and reliable repair solutions in cooperation with your nearest authorized KUHN dealer.

MERGE MAXX 950	MERGE MAXX 1090
7.50 / 9.50	8.85 / 11
8.20 to 9.50	10.70 to 11
8.8	10.2
1.00 to 1.50 in side windrow mode, up to 2.20 in central windrow mode	
3	
7.4	8.2
3.6	
2	
Self-contained hydraulic drive	
Central, side, left and right side or central + side	
	500 / 45 x 22.5
Setting to transport/work position, headland turn position, windrow delivery options, hour meter	
1,000 or 750, to specify on ordering	
2 point - Pivoting yokes - Cat. 2 and 3	
63	71
85	95
2 DA (1 with float position) - 1 extra DA if windrow curtain	
1 7-pin connector and 1 3-pin ISO connector	
As standard	
4,845	5,120

extra-large wheels, windrow curtain

KUHN SERVICES*

KUHN sos order - Spare parts service, 24/7**
KUHN protect+ - The choice of professionals!
KUHN i tech - For ever quicker repairs!
KUHN finance - Invest rationally!



**Not all services are available in all countries. ** except January 1, May 1 and December 25

MyKUHNS

THE LINK TO MY SUCCESS!

MyKUHNS is your online space. Sign up today and find out how MyKUHNS's exclusive services will help you manage your KUHN machinery and terminals more effectively. Log on with your computer, mobile phone or tablet computer to access spare parts catalogues, technical documentation and many connected services.



Check out our range of high-performance machines



1. Triple gang mower - 2. Triple gang mower conditioner - 3. Large-width tedder - 4. 4-rotor rake - 5. High-density baler - 6. Round baler - 7. Fixed-chamber baler-wrapper combination - 8. Wrapper.

KUHN SAS - 4 Impasse des Fabriques - BP 50060 - F-67706 Saverne CEDEX - FRANCE
KUHN NORTH AMERICA, INC. - 1501 West Seventh Avenue - Brodhead, WI 53520 - USA
KUHN FARM MACHINERY PTY. LTD - 313-325 Foleys Road - Deer Park, VIC, 3023 - AUSTRALIA
KUHN FARM MACHINERY (U.K.) LTD - Stafford Park 7 - GB TELFORD/ SHROPS TF3 3BQ

To find your nearest KUHN dealer,
visit our website www.kuhn.com

Information given in this document is only for information purposes and is non-contractual. Our machines are in compliance with regulations in force in the country of delivery. In our literature, and for improved illustration of certain details, some safety devices may not be in operating position. When operating these machines, these devices **must** be in position in accordance with the requirements indicated in the operator's manuals and pre-delivery instructions. RESPECT THE ROAD REGULATIONS IN FORCE AS WELL AS the tractor gross vehicle weight rating, its lift capacity and maximum load per axle and tyres. The tractor front AXLE load must always comply with the regulations of the country of delivery (In Europe, it must reach minimum 20 % of the tractor net weight). We reserve the right to change any designs, specifications or materials listed without further notice. Machines and equipment in this document can be covered by at least one patent and/or registered design. Trademarks cited in this document may be registered in one or several countries.

To protect the environment, this leaflet is printed on chlorine-free paper.
Printed in France - 920 572 GB - 06.21 - Copyright 2021 KUHN

