



KUHN FARM MACHINERY (UK) LTD, Stafford Park 7, Telford, Shropshire, TF3 3BQ

☎: 01952 239300

Web: www.kuhn.co.uk

PRESS RELEASE

KUHN adds widest 12.5m Optimer for CTF systems

KUHN Farm Machinery has introduced a 12.5m version of its Optimer disc cultivator that has been designed to work with controlled traffic farming systems (CTF).

The new 12500 L joins the existing range of Optimer cultivators, which start with the 3m mounted model. It features 100, 510mm discs arranged across two rows for working depths of 3-10cm and a Double U 550mm diameter rear roller for flexibility to cope with a wide range of soil types. Minimum power requirement is 350hp, and the new width complies with machines already working in CTF systems.

KUHN's arable and connected services product specialist, Edd Fanshawe, says the new models will help large scale farmers reduce compaction. "The Optimer range combines intensive mixing at high speed, with easy adjustment to suit conditions. The new 12500 L offers CTF users a stubble cultivator that can slot easily into existing systems and contribute to significantly lowering the number of wheelings during a season."

The 12500 L is part of a new generation of Optimer machines that includes the 9000 9m model and the previous flagship, the 12m Optimer 12000. Updates comprise of a new hydraulic stand to replace the manual version, along with a new folding and unfolding sequence. This is operated via a single user input replacing the four required on previous models.

Steady Control is standard on Optimer 9000, 12000 and the new 12500 L. The system offers users an easier way to manage working depth by controlling pressure in the hydraulic cylinders across the width to guarantee a consistent disc depth.

Additional seeding options include the SH 201, SH 402 and SH 600 small seed applicator tanks, with the latter also available on Espro drills. The new Optimer 12500 L will be on KUHN's stand at Cereals 2024.

-Ends-



Image: KUHN Optimer 12500 L

Caption: The widest Optimer 12500 L features Steady Control to guarantee even working depth across the width

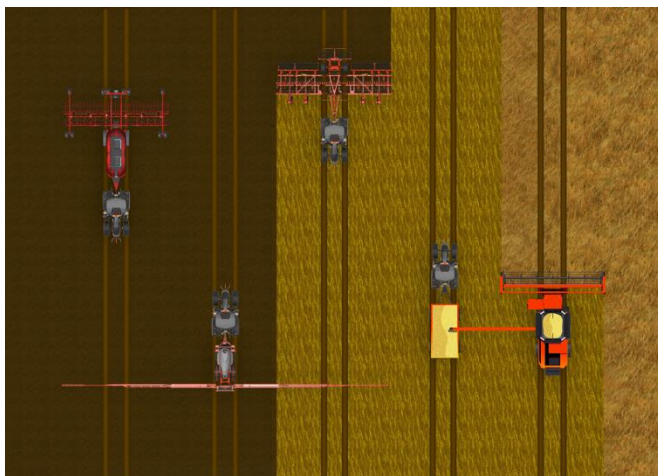


Image: CTF system

Caption: The 12.5m Optimer matches existing widths for CTF systems

Notes to editors:

- The KUHN Group employs more than 6,000 people globally and has over 2,000 patents filed.
- KUHN specialises in the design and manufacture of tractor-drawn agricultural equipment: soil preparation, seeding, fertilisation, spraying, hay/silage making, baling, wrapping, residue shredding and landscape maintenance.

- KUHN Farm Machinery (UK) Ltd has its headquarters at Telford, Shropshire
- More information from Kate Hamer, Kuhn Farm Machinery (UK) Ltd, T: 01952 239300 E: kate.hamer@kuhn.com
- Issued by Agribusiness Communications Limited: Tel. 01694 731777
- This news release and image(s) can be downloaded from the ABC press centre: www.abccomms.co.uk, or by contacting sarah@abccomms.co.uk